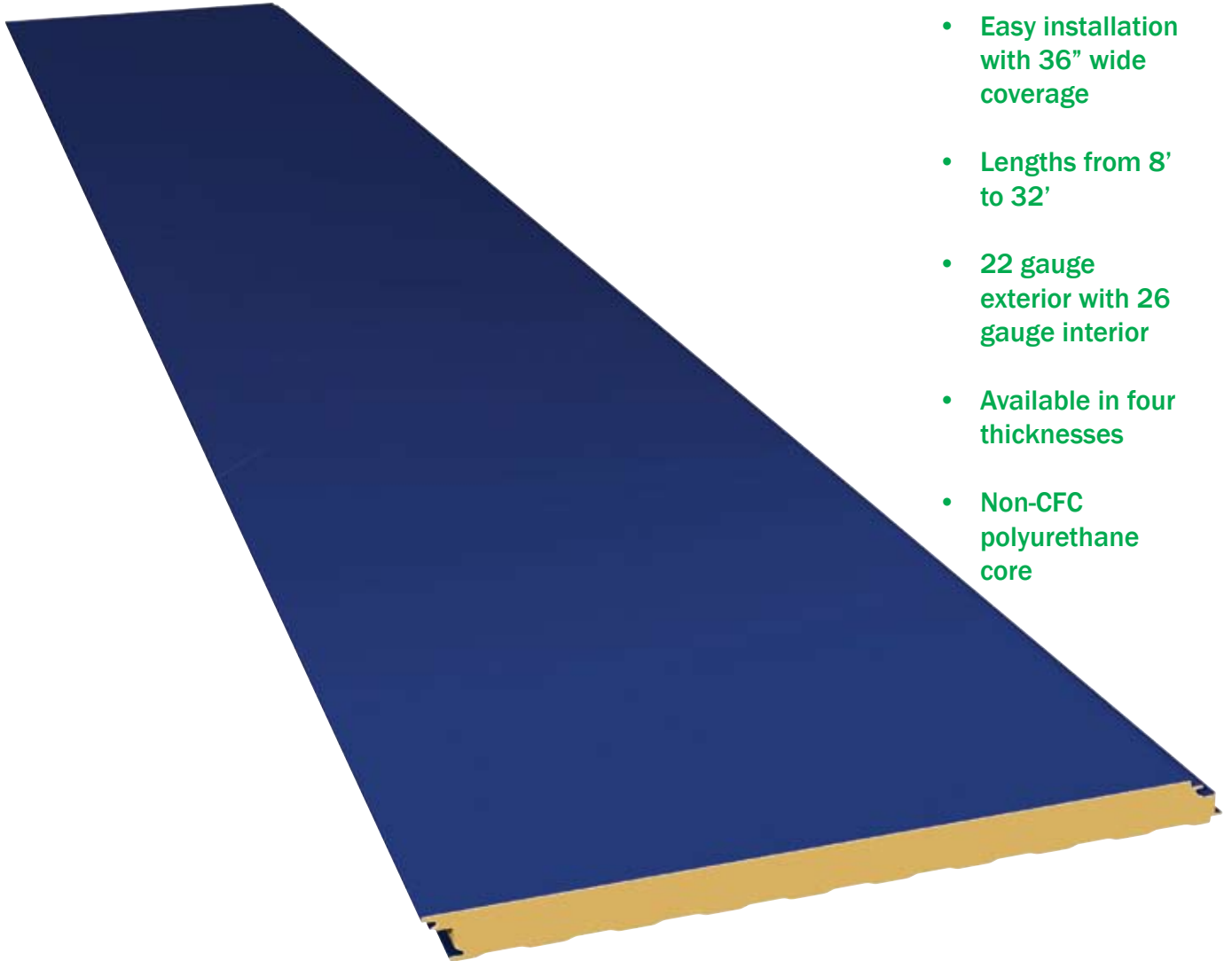


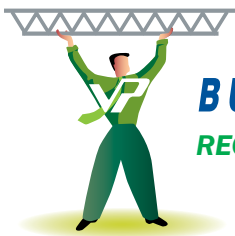
# VP WALL SYSTEMS

STYLE	FEATURES
<b>THERMALCLAD ARCHITECTURAL PANEL</b>	HIGH PERFORMANCE, FLAT PROFILE INSULATED PANEL, IDEAL FOR ARCHITECTURAL PROJECTS REQUIRING THERMAL PROTECTION



- Easy installation with 36" wide coverage
- Lengths from 8' to 32'
- 22 gauge exterior with 26 gauge interior
- Available in four thicknesses
- Non-CFC polyurethane core

VP's ThermalClad Architectural panel is made for applications requiring flat profile insulated panels with concealed fasteners.



**BUILD SMART BUILD GREEN WITH VP**  
RECYCLED STEEL COOL PAINTS ENERGY SAVING INSULATION



# VP BUILDINGS' THERMALCLAD FLAT INSULATED WALL PANELS USE CONCEALED FASTENERS TO PROVIDE A SMOOTH ARCHITECTURAL PROFILE

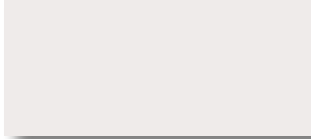
## THERMALCLAD

### ARCHITECTURAL PANEL

VP's Architectural wall panels are designed for high profile projects that require a flush exterior wall finish. This panel is 36" wide and available in four thicknesses, each with an insulated core made from foamed in-place, blister free, non-CFC polyurethane. Maximum panel length is 32'-0".

The exterior panels are made from extra heavy-duty 22 gauge, G-90 steel, coated with a 70% PVDF fluoropolymer finish. Interior panels are planked style 26 gauge steel, factory coated with a white polyester finish. USDA approved finishes available. Exterior color options include:

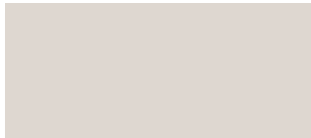
Polar White -USDA Approved



Desert Beige



Sandstone



Regal Gray



Aegean Blue



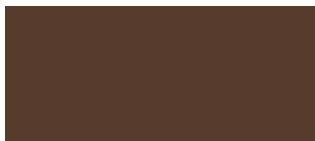
Brick Red\*



Forest Green\*



Sculpture Bronze\*



ThermalClad exterior finishes meet Kynar 500 and Hylar 5000 specifications. Kynar 500® is a registered trademark of Arkema.

Hylar 5000® is a registered trademark of Solvay Solexis.

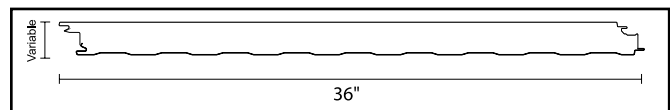
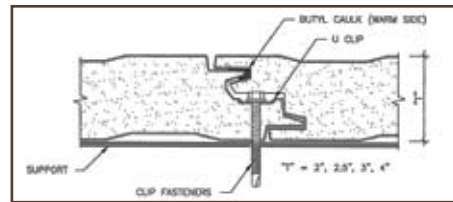
\*Sculpture Bronze, Brick Red and Forest Green are not recommended for exterior color on cooler and freezer buildings.

Note: Tests and approvals include FM 4880 and FM 4881, Dade County Air and Water infiltration tests AAMA 501, ASTM E 283 and E 331.



### FEATURES

- Offset double tongue-and-groove side joint
- Lengths from 8'-32' and 36" coverage
- Fastener head and clip concealed in side joint
- R-values up to R-34.9 available



Note: All panels formed from light gauge metal may exhibit waviness, also known as "Oil Canning," commonly occurring in, but not restricted to, flat portions of a panel. This inherent characteristic is not a defect of material or manufacturing and is not cause for rejection.

### Insulation Effectiveness

Panel Insulation Thickness	Operating Temperature	Thermal Conductivity (K-Factor)	Heat Transfer Coefficient (U-Value)	Thermal Resistance (R-Value)
2"	+40° F	.1146	.0573	17.45
2.5"	+40° F	.1146	.0459	21.81
3"	+40° F	.1146	.0382	26.18
4"	+40° F	.1146	.0287	34.9



2045 Revised 5/09  
 Varco Pruden Buildings, 3200 Players Club Circle, Memphis, TN 38125  
 ©2009 BlueScope Buildings North America, Inc. All rights reserved.  
 Varco Pruden Buildings® is a division of BlueScope Buildings North America, Inc.  
 Find your independent Authorized VP Builder at [www.vp.com](http://www.vp.com)  
 Varco Pruden meets IBC manufacturing; is a member of the USGBC and has Energy Star rated products. Many of our processes are certified by Canadian A-660 and approved by Factory Mutual.

